

Sink Phantom Base 32" x 20" – U/M

Kitchen Sinks

Code: 5530 900



DETAILS

| | |
|----------|--------------------------|
| Material | AISI 304 stainless steel |
|----------|--------------------------|

Texture Foster brushed

Dimensions 32 3/8" x 20 3/8"

| | |
|-------------------|---------------|
| Standard fittings | Drain |
| | Boxed packing |

Built-in hole [View technical data sheet](#)

| | |
|----------------|-----------|
| Bowl dimension | 30" x 18" |
|----------------|-----------|

Number of bowls 1 bowl

Waste fitting 3,5" drain

FEATURES

PHANTOM BASE | 20-30 mm

The Phantom BASE sink's bottoms are specifically engineered to be coupled with sinks made out of slabs. The perimetric trough makes for a simple and perfect installation. This version of Phantom BASE is meant for slabs of 20mm or 30mm thickness.

PHANTOM BASE WITHOUT WELDING

The steel bottom Phantom BASE solves the problem of water draining of slab sinks, because the slope built into the moulded bottom ensures perfect draining. The radius and sloped profile of Phantom BASE guarantee great practicality and hygiene in everyday cleaning.

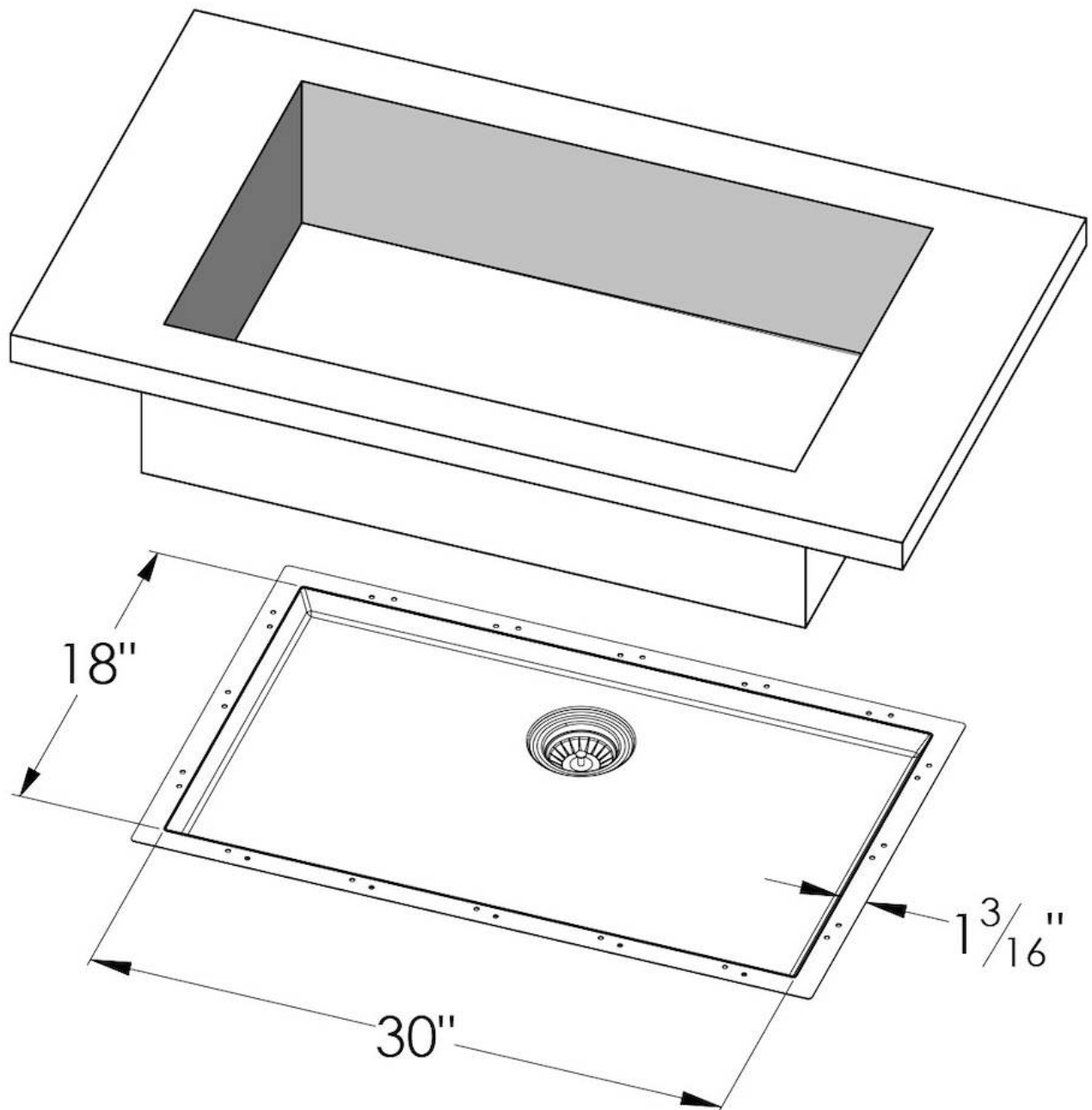
High thickness

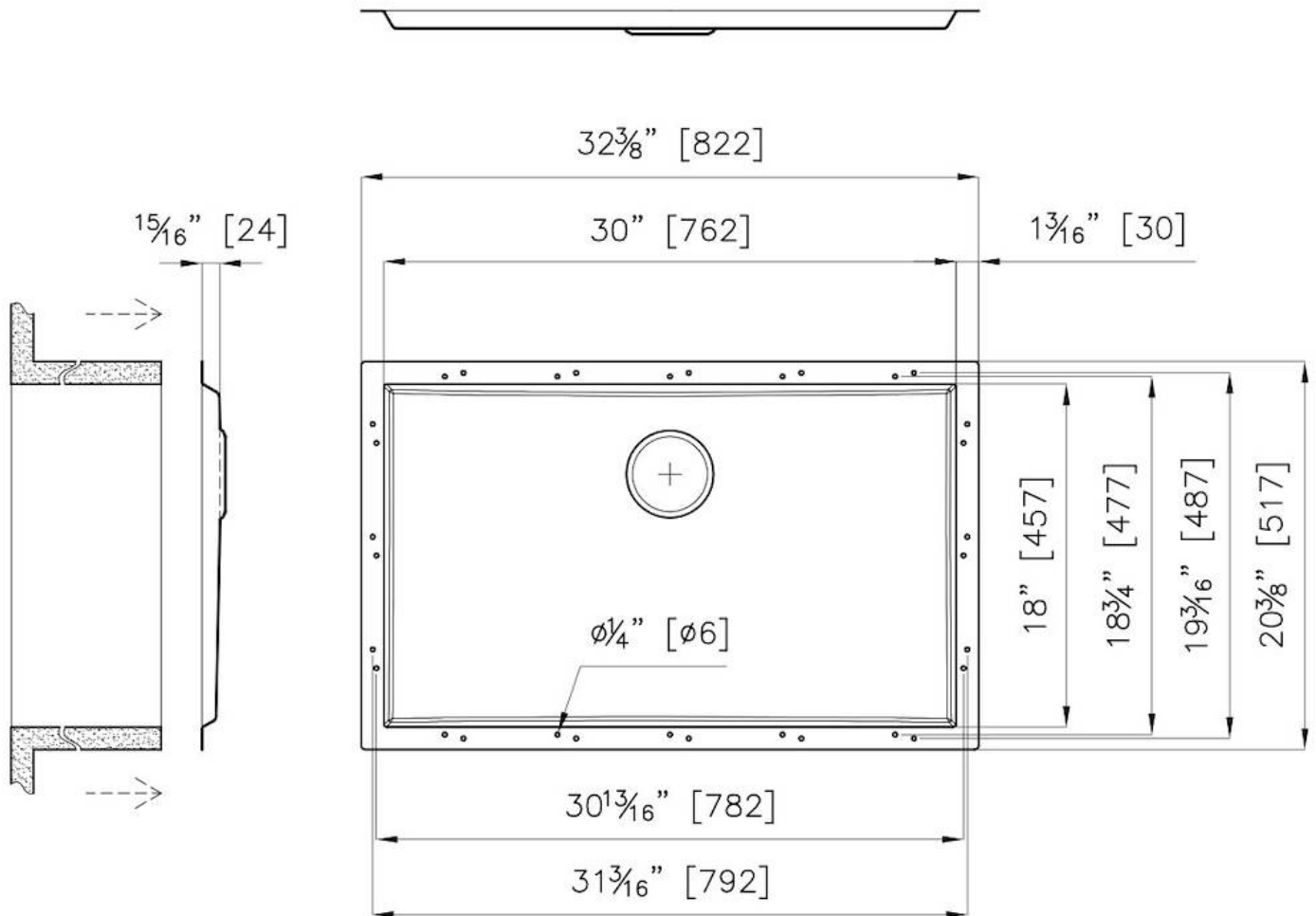
1.5 mm thick steel. A significant thickness, which guarantees the maximum sturdiness and durability.

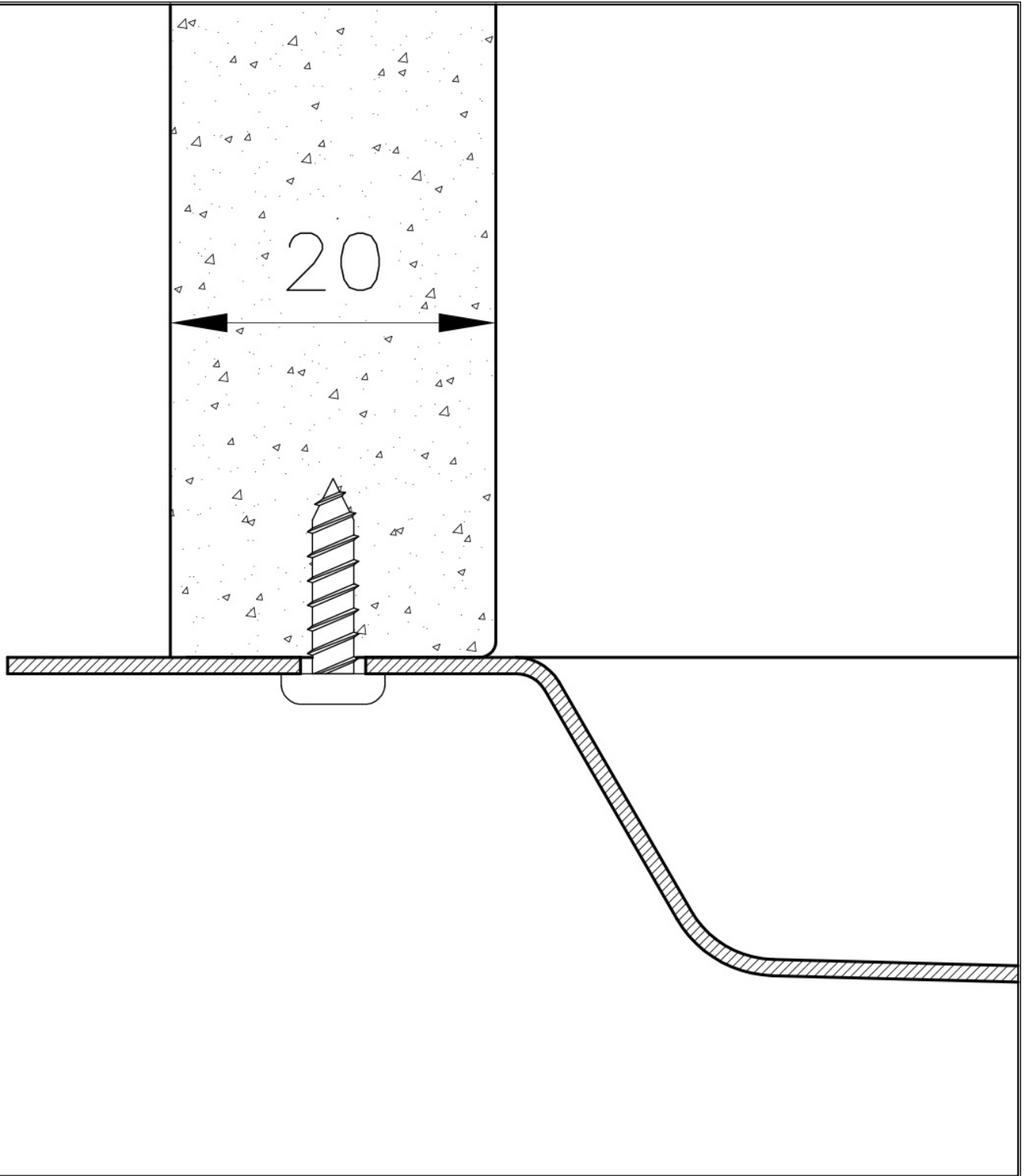
Small radius

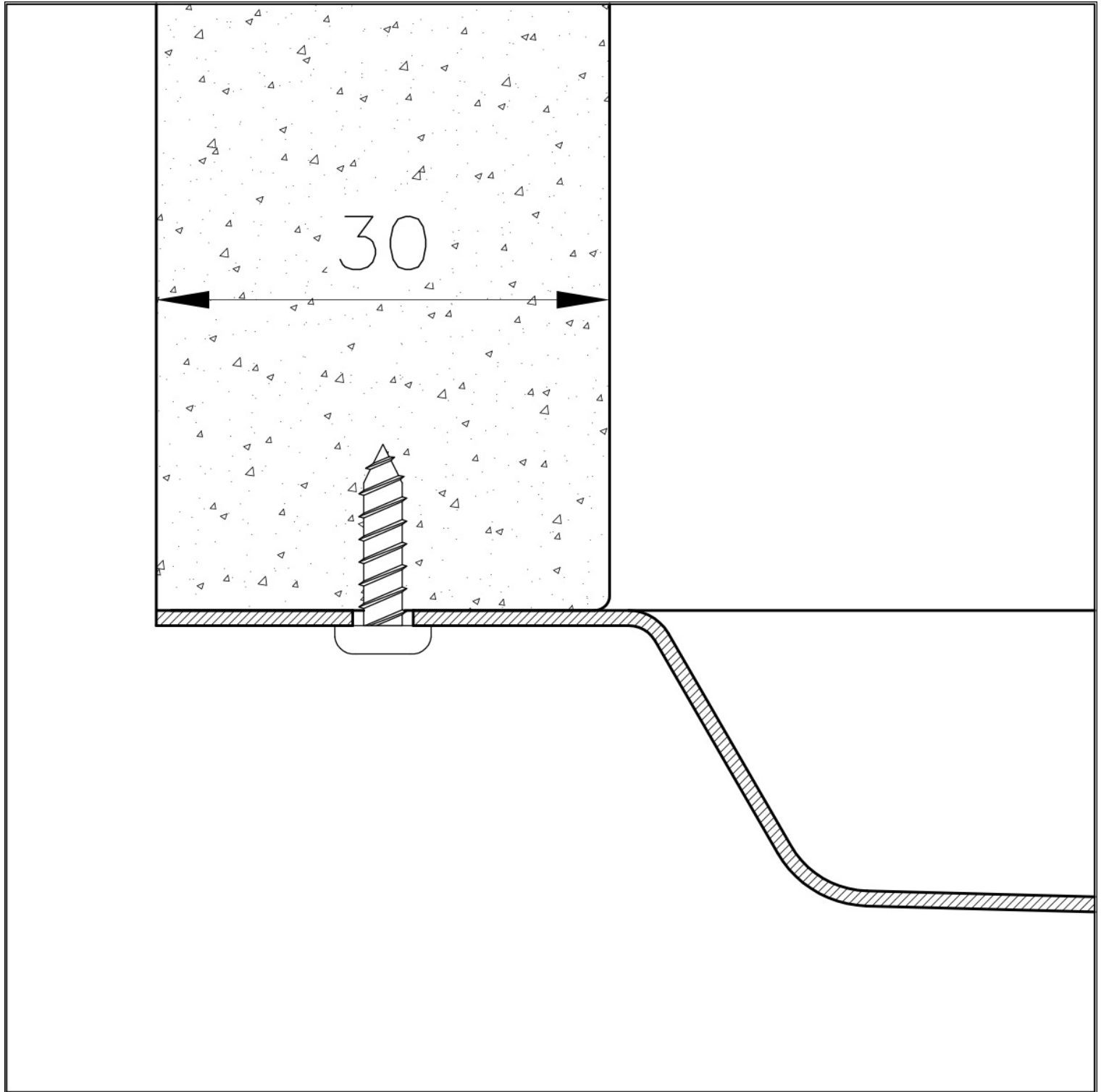
Bowls with squared shapes with a modern design and an increased capacity, for a minimal aesthetics connected with an extreme practicality.

TECHNICAL DATA









GALLERY



OPTIONAL ACCESSORIES



Waste disposer throat
8669 043

RECOMMENDED PAIRINGS



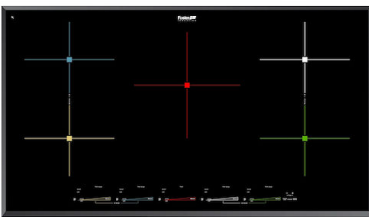
Faucet Capri
8467 005



Faucet Salina
8487 005



Milano Cooktop 4 burners inLine
7640 900



Milano Induction Cooktop 5 Plate
7390 945